



SKM35ZSP-W

3.5kW

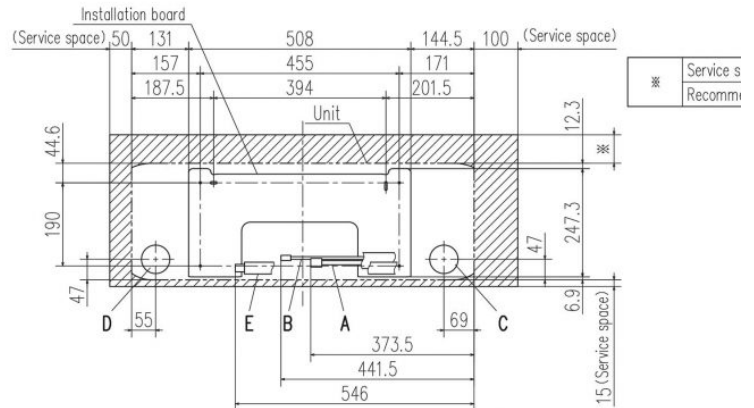
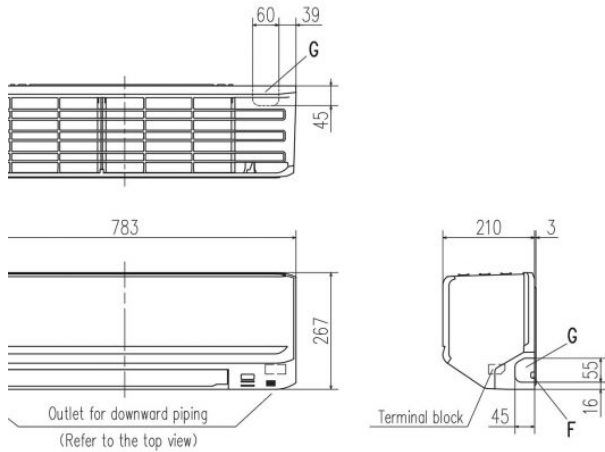
Specifications

Nominal cooling capacity		kW	3.5
Nominal heating capacity		kW	4.5
Sound power level	Cooling	dB(A)	58
	Heating	dB(A)	58
Sound pressure level	Cooling(Hi/Me/Lo/Ulo)	dB(A)	44 / 37 / 25
	Heating(Hi/Me/Lo/Ulo)	dB(A)	42 / 37 / 30
Air flow	Cooling(Hi/Me/Lo/Ulo)	m ³ /min	9.0 / 7.5 / 5.0
	Heating(Hi/Me/Lo/Ulo)	m ³ /min	8.5 / 7.0 / 6.0
Exterior dimensions (H×W×D)		mm	267×783×210
Net weight		kg	7.5
Refrigerant piping size	Liquid / Gas	mm ø	6.35(1/4")/9.52(3/8")
Clean filter			-

- The data is measured under the following conditions(ISO-T1, H1). Cooling: Indoor temp. of 27°CDB, 19°CWB, and outdoor temp. of 35°CDB. Heating: Indoor temp. of 20°CDB, and outdoor temp. of 7°CDB, 6°CWB.
- Sound level the value in an anechoic chamber. During operation these values are somewhat higher due to ambient conditions.

Schematics

ZSP-W SRK35ZSP-W SRK45ZSP-W
ZSP-S SRK35ZSP-S SRK45ZSP-S
ZSP-W SKM25ZSP-W SKM35ZSP-W



Space for installation and service when viewing from the front

Symbol	Content
A	Gas piping SRK25,35 SKM20,25,35 $\phi 9.52$ (3/8") (Flare) SRK45 $\phi 12.7$ (1/2") (Flare)
B	Liquid piping $\phi 6.35$ (1/4") (Flare)
C	Hole on wall for right rear piping ($\phi 65$)
D	Hole on wall for left rear piping ($\phi 65$)
E	Drain hose VP16
F	Outlet for wiring
G	Outlet for piping (on both side)